

Responding to requests to Child Protection to share information under the Family Violence Information Sharing Scheme

Decision tree 3

... continued from decision tree 2
You are a community based CPP working in a hub or a delegated CP representative at a RAMP and the request does not relate to assessing or managing FV risk to a child

KEY

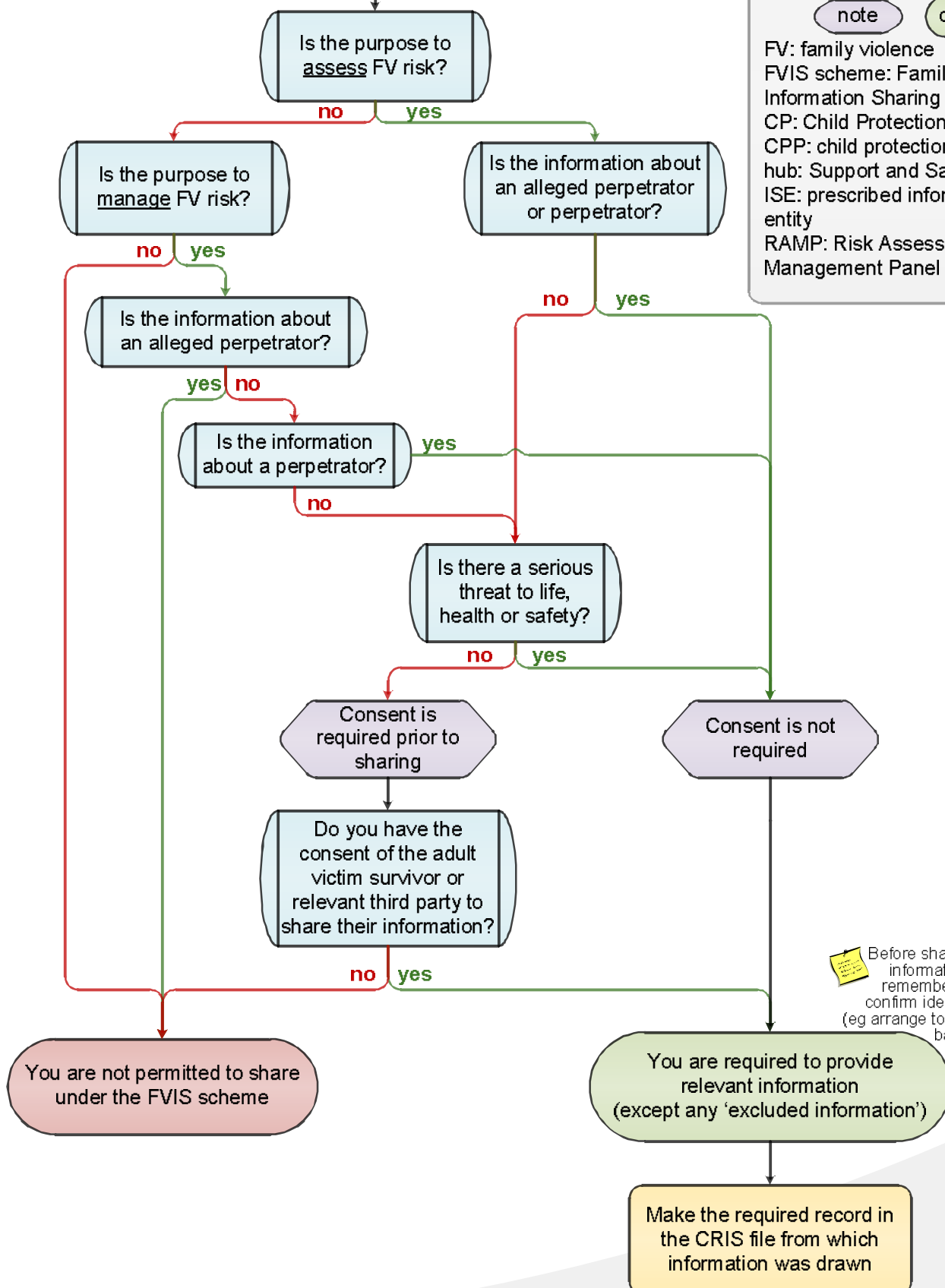
process

question

note

outcome

FV: family violence
FVIS scheme: Family Violence Information Sharing Scheme
CP: Child Protection
CPP: child protection practitioner
hub: Support and Safety Hub
ISE: prescribed information sharing entity
RAMP: Risk Assessment and Management Panel



Before sharing information, remember to confirm identity (eg arrange to call back)