

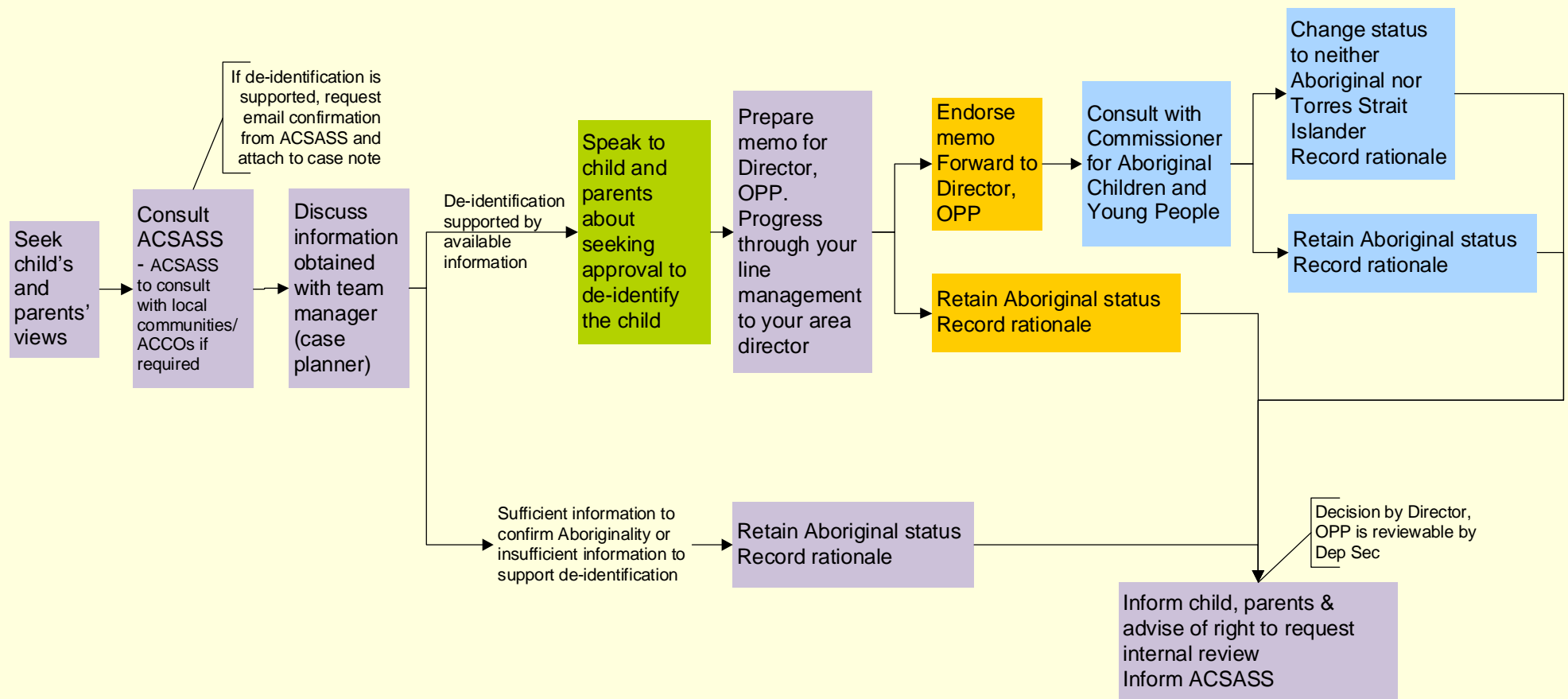
De-identification of a child as Aboriginal and/or Torres Strait Islander by Child Protection during investigation, protective intervention, protection order or closure phase

Note: Where the term Aboriginal is used it refers to Aboriginal and/or Torres Strait Islander children.

This process is to be followed if the case is in investigation, protective intervention, protection order or closure phase, and consideration is being given to changing a child's status from Aboriginal and/or Torres Strait Islander to neither Aboriginal nor Torres Strait Islander.

Refer to 'De-identification of a child as Aboriginal and/or Torres Strait Islander by Child Protection' procedure and advice.

Child's status has been recorded as Aboriginal (in intake or since) but new information suggests child may not be Aboriginal



Child protection practitioner task

Team manager task

Area Director task

Director, OPP task