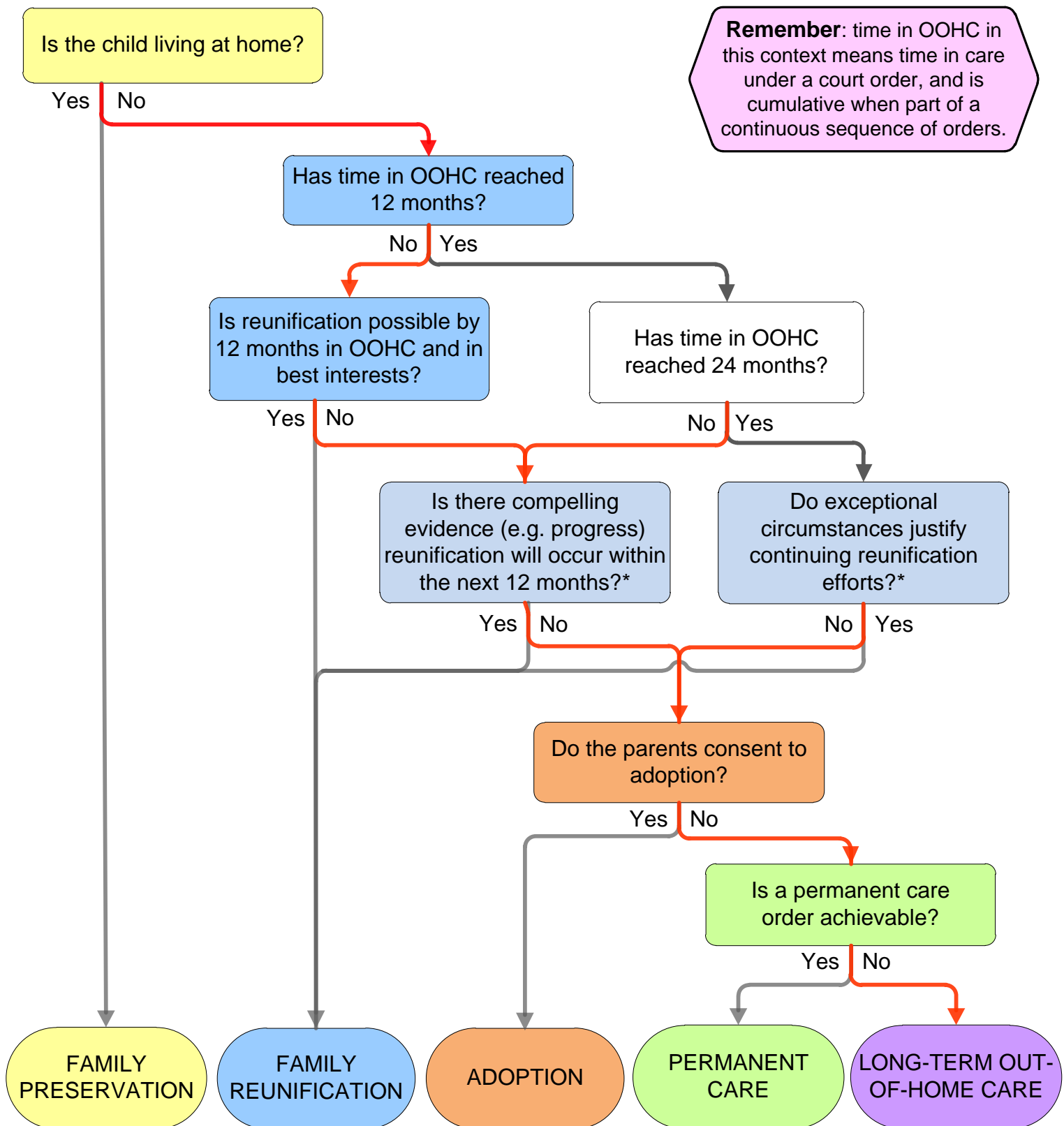


# Choosing the case plan permanency objective

The chosen permanency objective determines the recommended disposition to the Children's Court. If the Court makes a different order, the permanency objective **must** be changed to be consistent with the order. If circumstances change, an application should be made to the Court recommending a disposition consistent with the new permanency objective.



\*For example: a parent is due for release from prison and no protective concerns exist; parent is recovering recovery from a lengthy illness, suggesting reunification is achievable within a timeframe consistent with the child's best interests.